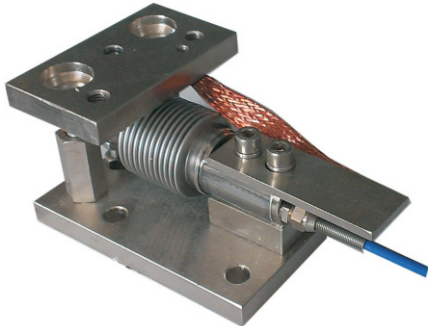


Stainless steel

Related Capacity: 50kg to 500kg

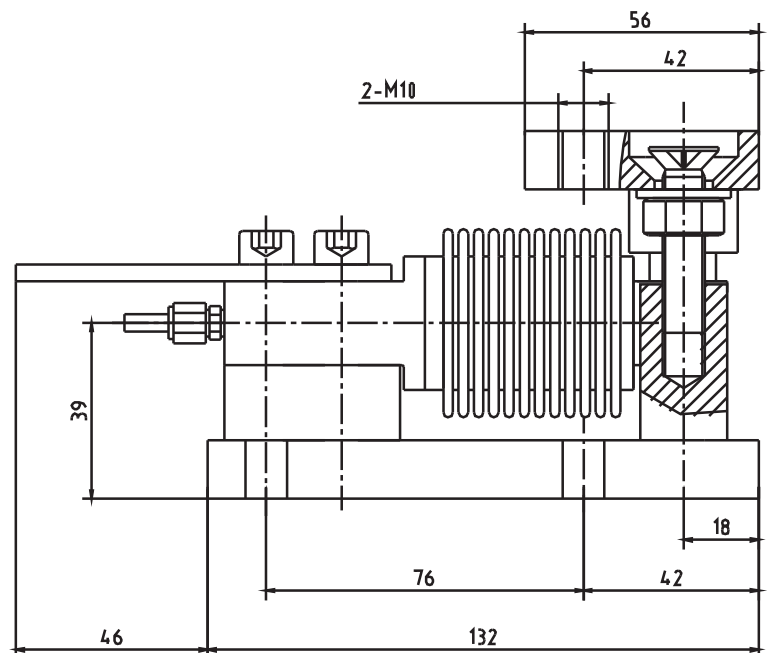
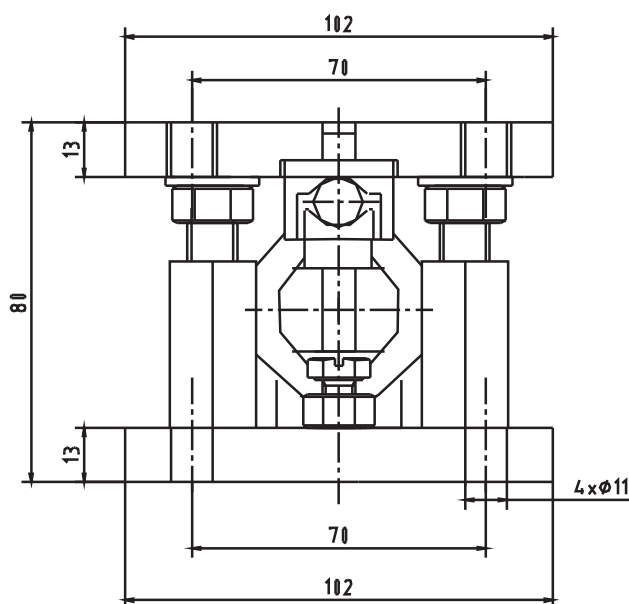


Application:

1. Lower capacity tank and vessel weighing.
2. Process controlling and batching.

Introduction:

WL601M is with unique design, isolating the load cell from side loads, overload, minimizing load cells mechanical damage and eliminating the need for extraneous hardware.



Radial mode

Tangent mode

Rectangle mode

