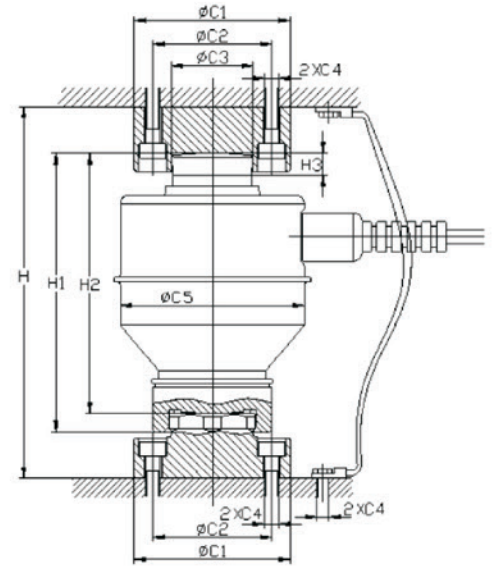




ALLOY STEEL

# Canister Compression



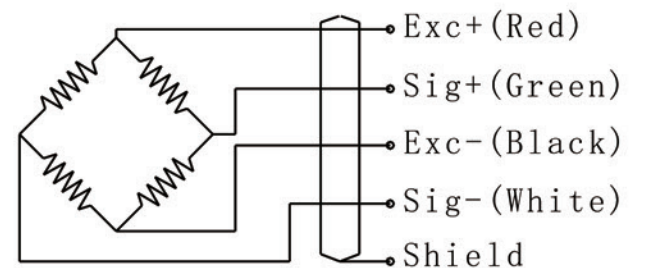
## RATED CAPACITY

ton/mm	H	H1	H2	H3	C1	C2	C3	C4	C5
10 to 50	200	150	140	12	83.5	64	43.8	M8	99

## SPECIFICATIONS

Full scale Output:	$2 \pm 0.002\text{mV/V}$
Zero Balance:	$\pm 1\% \text{ F.S}$
Accuracy:	C3, C4, OIML approval
Repeatability:	$< \pm 0.01\% \text{ F.S}$
Hysteresis Error:	$< \pm 0.02\% \text{ F.S}$
Creep (30 min):	$< \pm 0.02\% \text{ F.S}$
Input Resistance:	$750\Omega \pm 10\Omega$
Output Resistance:	$700\Omega \pm 20\Omega$
Recommended Excitation:	10V (15V Maximum)
Insulation Resistance:	$> 5000\text{M}\Omega$ (50V DC)
Temperature Effect on Sensitivity:	$< \pm 0.02\% \text{ F.S}/10^\circ\text{C}$
Temperature Effect on Zero Balance:	$< \pm 0.02\% \text{ F.S}/10^\circ\text{C}$
Compensated Temperature Range:	$-10^\circ\text{C}$ to $40^\circ\text{C}$
Operating Temperature Range:	$-10^\circ\text{C}$ to $40^\circ\text{C}$
Storage Temperature Range:	$-30^\circ\text{C}$ to $70^\circ\text{C}$
Safe Overload:	150% of full scale
Ultimate Overload:	250% of full scale
IP class:	Ip68
Material:	Alloy Steel
Warranty:	One-year limited warranty

### Wiring Schematic Diagram



### INTERCHANGEABLE PRODUCTS

Manufacturer	Model
HBM	C16
Keli Sensing	ZSFY
Zemic	BM14G

C3 is Available for 20 to 100t, the accuracy beyond 20 to 100t is accuracy is 0.03% F.S