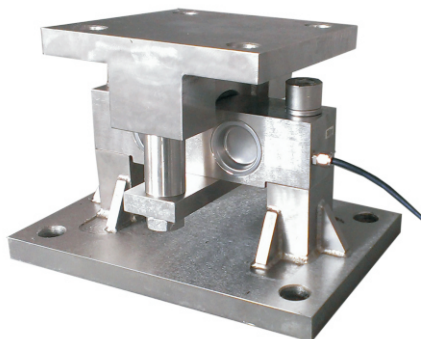


# Alloy steel

Related Capacity: 10 to 75klb



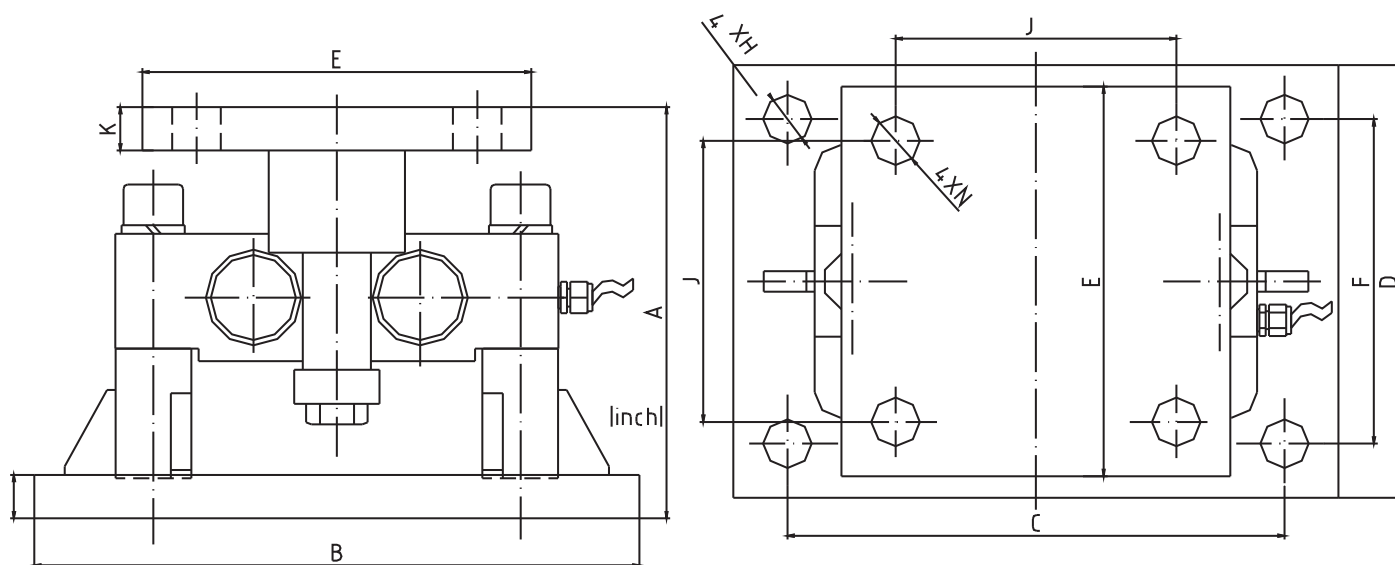
## Application:

1. High-capacity truck & track weighing scale.
2. Big on-boarding weighing.
3. High-capacity tank, vessel, hopper weighing scale.

## Introduction:

To be with smart design, shaddle-shapped fitting surface protects the double-ended shear beam load cell from damaging side load and automatically return the mount to center, also the load can be measured efficiently and prolerly.

This series mounting module is applied to big truck scale, high-accuracy tank, vessel, hopper weighing process.



k l b mm	A	B	C	D	E	F	H	J	K	L	M
10~25	168	254	190.5	203	203	152	20	152	19	19	20
40	198	355.6	292.1	254	203	190.5	28.5	152	19	25.4	20
50~75	241.3	355.6	292.1	254	228.6	190.5	28.5	165	25.4	25.4	28.5