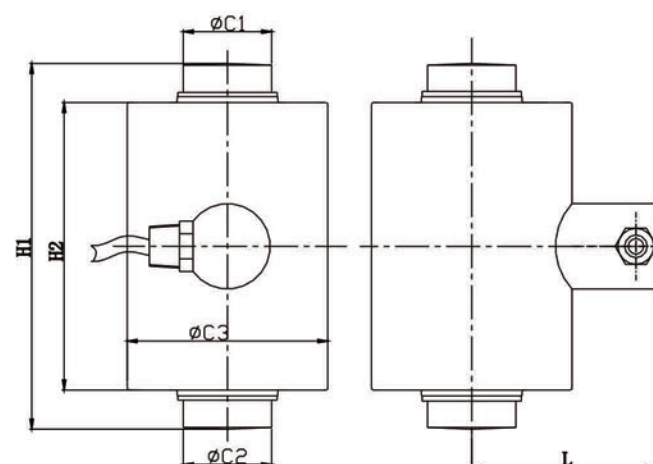




ALLOY STEEL

Canister Compression



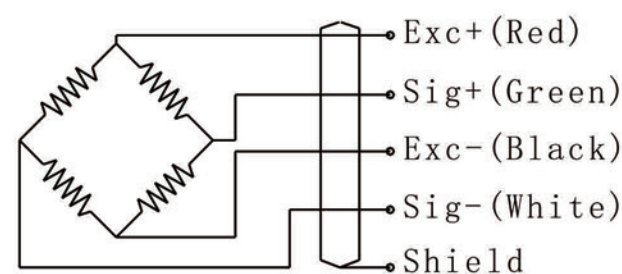
RATED CAPACITY

| K1b/inch | L | H1 | H2 | C1 | C2 | C3 | | | |
|------------|-----|------|------|------|------|----|--|--|--|
| 50,100,120 | 3.6 | 7.25 | 5.75 | 1.75 | 1.75 | 4 | | | |
| | | | | | | | | | |
| | | | | | | | | | |

SPECIFICATIONS

| | |
|-------------------------------------|---|
| Full scale Output: | $2 \pm 0.03\text{mV/V}$ |
| Zero Balance: | $\pm 1\% \text{ F.S}$ |
| Combined accuracy: | $< \pm 0.03\% \text{ F.S}$ |
| Repeatability: | $< \pm 0.02\% \text{ F.S}$ |
| Hysteresis Error: | $< \pm 0.03\% \text{ F.S}$ |
| Creep (30 min): | $< \pm 0.02\% \text{ F.S}$ |
| Input Resistance: | $1150\Omega \pm 10\Omega$ |
| Output Resistance: | $1050\Omega \pm 10\Omega$ |
| Recommended Excitation: | 10V (15V Maximum) |
| Insulation Resistance: | $> 5000\text{M}\Omega$ (50V DC) |
| Temperature Effect on Sensitivity: | $< \pm 0.02\% \text{ F.S}/10^\circ\text{C}$ |
| Temperature Effect on Zero Balance: | $< \pm 0.02\% \text{ F.S}/10^\circ\text{C}$ |
| Compensated Temperature Range: | -10°C to 40°C |
| Operating Temperature Range: | -10°C to 40°C |
| Storage Temperature Range: | -30°C to 70°C |
| Safe Overload: | 150% of full scale |
| Ultimate Overload: | 250% of full scale |
| IP class: | Ip68 |
| Material: | Alloy Steel |
| Warranty: | One-year limited warranty |

Wiring Schematic Diagram



INTERCHANGEABLE PRODUCTS

| Manufacturer | Model |
|--------------|----------|
| Cardinal | SCA, HDD |
| Totalcomp | TCSCA |
| Rice Lake | RLSCA |